



# MINERVA

## R2106E SATA 3 to mSATA 2-port & M.2 2-port RAID

---

### RAID 0 Mode Performance & Burn In Test Rev. 1.0

#### Table of Contents

---

---

1. Overview
  
2. Performance Measurement Tools and Results
  - 2.1 Test Platform
  - 2.2 Test target and Used SATA III / mSATA SSD
  - 2.3 Install Hardware
  - 2.4 BIOS & Windows 8.1 x64 OS environment setup
  - 2.5 CrystalDiskMark 3.0.3 x64 performance test
  - 2.6 AS SSD Benchmark 1.7 performance test
  - 2.7 ATTO Disk Benchamrk 2.47 performance test
  - 2.8 AnvilBenchmark\_V110\_B337 Benchmark performance test
  
3. Burn In Tests and Results
  - 3.1 BurnInTest V8.0 Pro burn in test
  
4. Summary

# R2106E SATA 3 to mSATA 2-port & M.2 2-port RAID Card

---

## 1. Overview

R2106E RAID card offers SATA 3 interface, built-in 2-port Mini PCI-e 52-pin connector & 2-port M.2 B key connector, can be combined mSATA SSD into a RAID 0, RAID 1, JBOD mode.

This test report is based M.2 NGFF SSD x2, RAID 0 set as a benchmark.

## 2. Tools and Results of Performance Measurement

### 2.1 Test Platform

M/B : ASRock **Z97 Extreme 6**

CPU : Intel **i5-4426**, 3.2GHz/ 6M Cache/ LGA1150

Memory : Kingston **KVR16N11S8/4**, DDR3-1600MHz, 8G(4GB DIMM\*2)

ATX Power : FSP RAIDER 550, **550W ATX**, 12V V2.2 Power Supply

Graphic : Z97 Chipsets built-in **HD Graphics 4600**

OS : Microsoft **Windows 8.1 64bit OS**

### 2.2 Test target: R2106E RAID Card and M.2 NGFF SSD(LGT-128M6G/128GBx2)



R2106E Adapter



LGT-128M6G x2

### 2.3 Install Hardware

2.3.1 Insert M.2 SSDx2 into R2106E converter's Mini PCI-e connector, and then with coppers, and screws to fix SSDs. (Please refer to the Installation Notes).  
Connect R2106E converter to **SATA III Port of ASRock Z97 Extreme6**.

### 2.4 BIOS & Windows 8 OS environment setup

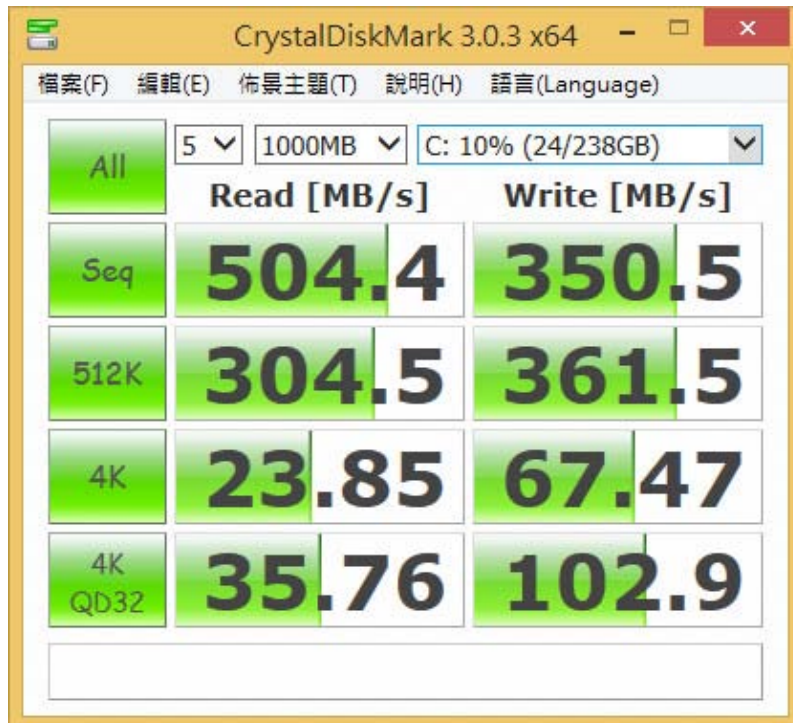
2.4.1 Install Windows 8.1 x64 OS.

# R2106E SATA 3 to mSATA 2-port & M.2 2-port RAID Card

## 2.5 CrystalDiskMark 3.0.1 x64 performance test

※Benchmark (Sequential **Read & Write** / default = **1MB**)

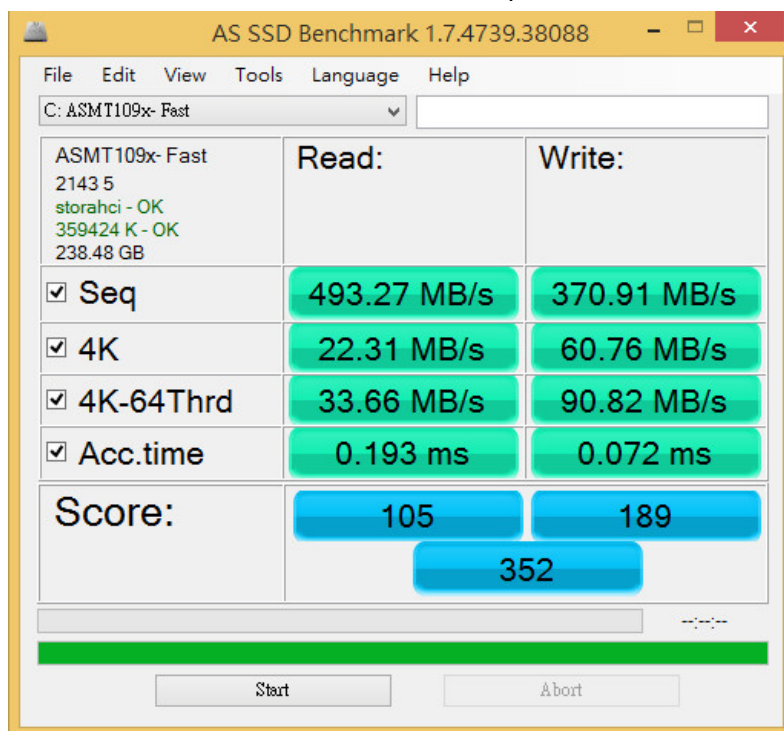
2.5.1 Used LITE-ON [LGT-128M6Gx2](#) in **RAID 0** performance as below:



## 2.6 AS SSD Benchmark 1.7 performance test

※Benchmark (**Read & Write** by MB/s, default block size = **16MB**)

2.6.1 Used LITE-ON [LGT-128M6Gx2](#) in **RAID 0** performance as below:

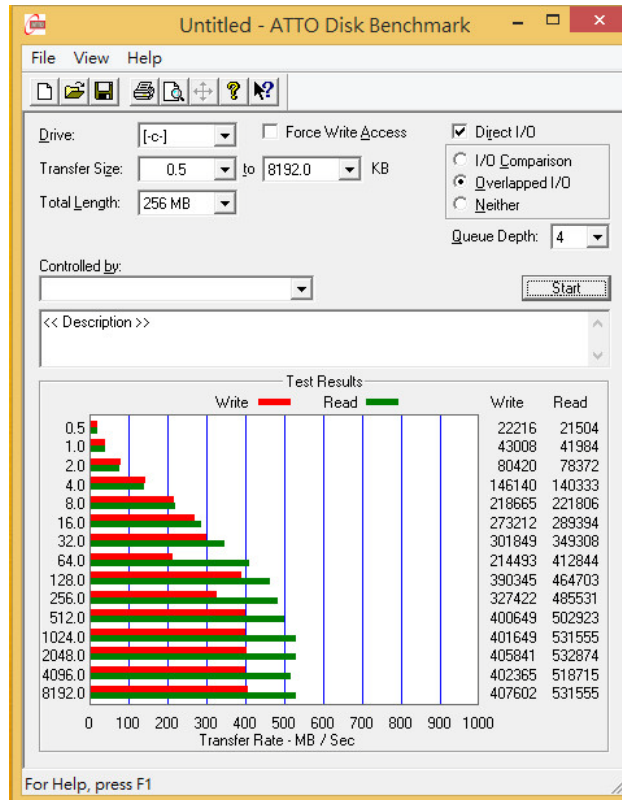


# R2106E SATA 3 to mSATA 2-port & M.2 2-port RAID Card

## 2.7 ATTO Disk Benchmark performance test

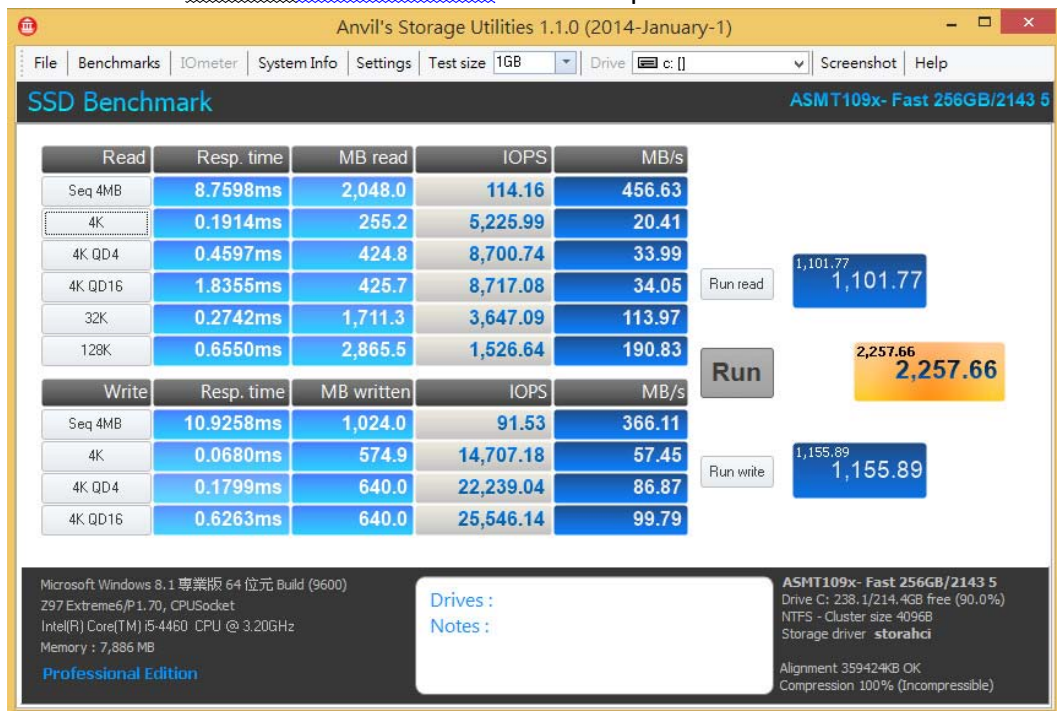
※Benchmark (Sequential **Read** / default block size = **8MB**)

2.7.1 Used LITE-ON **LGT-128M6Gx2** in **RAID 0** performance as below:



## 2.8 AnvilBenchmark\_V110\_B337

2.8.1 Used LITE-ON **LGT-128M6Gx2** in **RAID 0** performance as below:



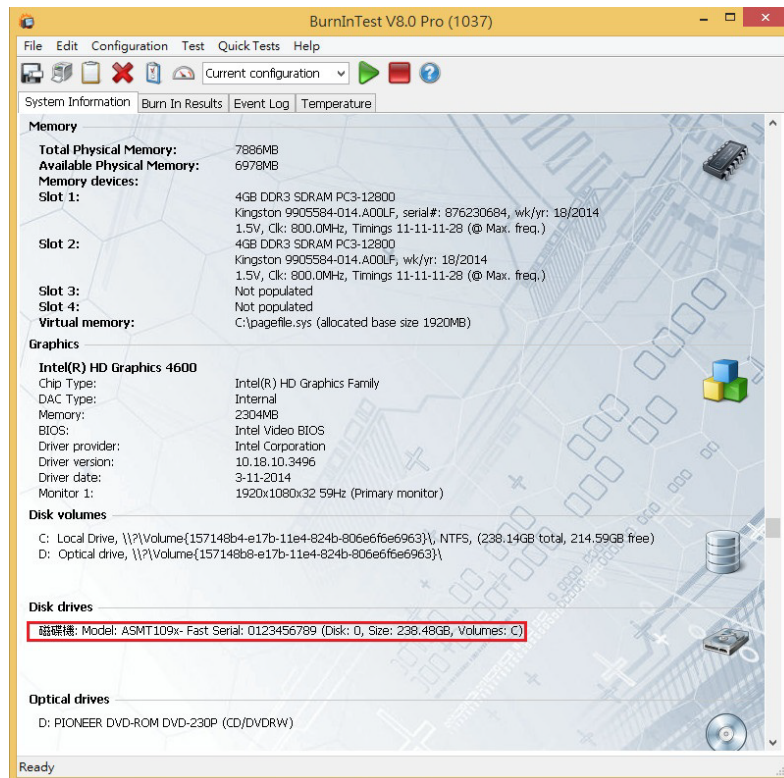
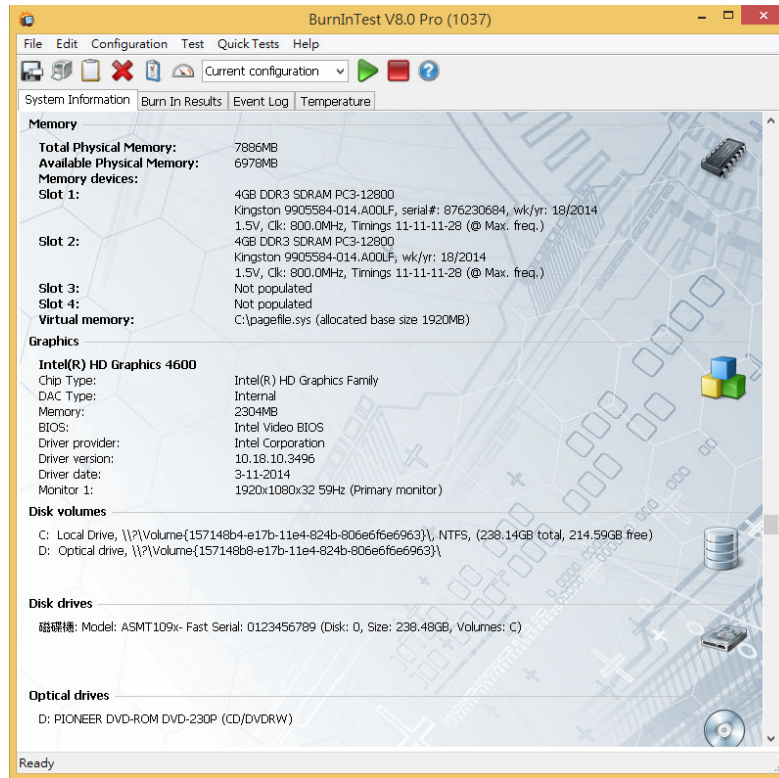


# R2106E SATA 3 to mSATA 2-port & M.2 2-port RAID Card

## 3. Burn In Tests and Results

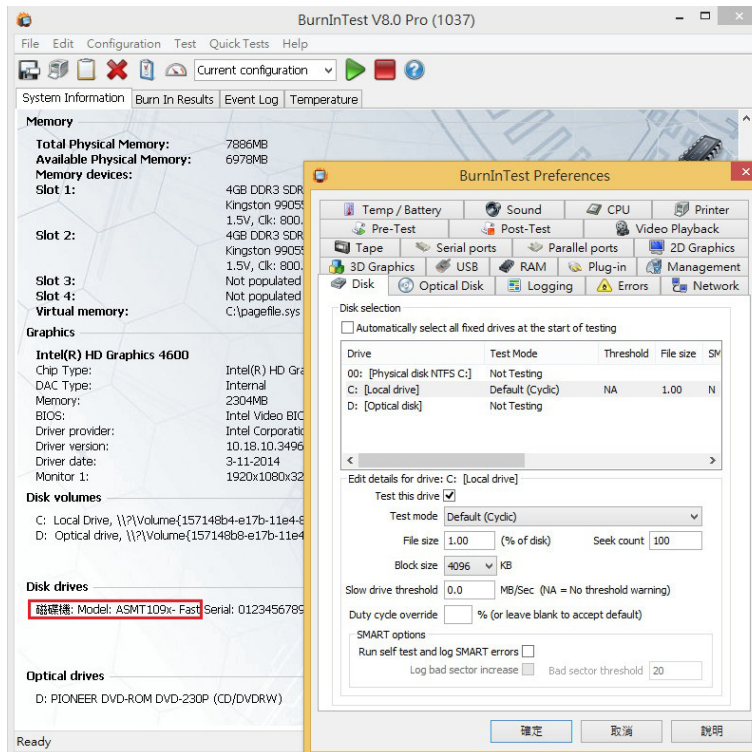
### 3.1 BurnInTest v7.1 Pro

3.1.1 system information for LITE-ON LGT-128M6Gx2 in RAID 0 as below:

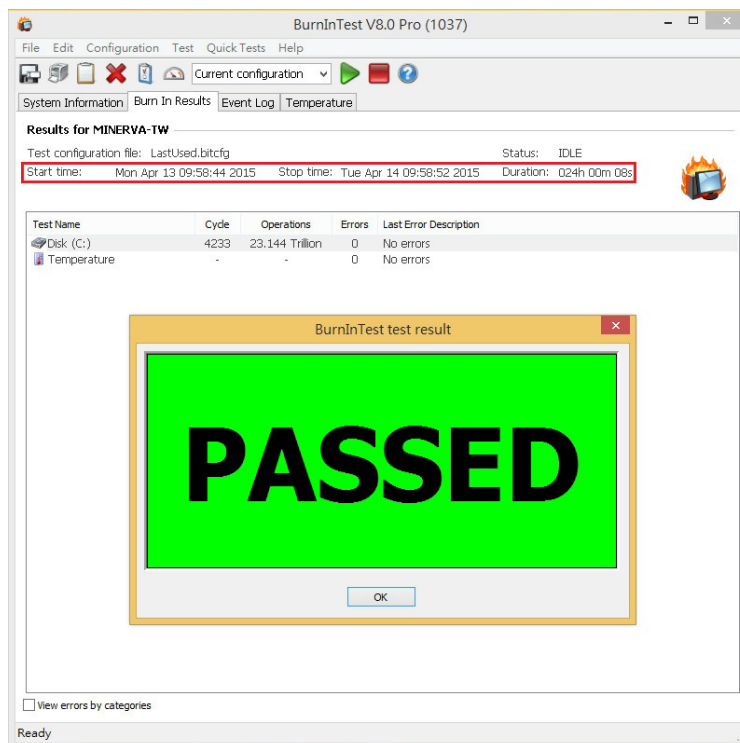


# R2106E SATA 3 to mSATA 2-port & M.2 2-port RAID Card

## 3.1.2 show RAID 0 SSD test mode(default cyclic -- 10 ways cycle test)



## 3.1.3 show LITE-ON LGT-128M6Gx2 in RAID 0 24-hour Burn-in test PASSED



## 4. Summary

4.1 R2106E is SATA III Interface, I/O speed, max. to 600MB/s.

4.2 R2106E adapter I/O performance is based on M.2 NGFF SSD.